

NEWSLETTER FOR THE VILLAGES OF WOOTTON, GLYMPTON AND KIDDINGTON

# *Outreach*



**FEBRUARY 2024**

THE KILLINGWORTH CASTLE

# Supper Club

EVERY THURSDAY 6-7PM

*Two course dinner for two £35pp includes a bottle of house wine per couple*

BOOK ONLINE: [WWW.THEKILLINGWORTHCASTLE.COM](http://WWW.THEKILLINGWORTHCASTLE.COM)

**OPEN ALL DAY, TUES-SUN**  
**REAL ALES • BAR MENU • AL A CARTE & TASTING MENUS**  
**BEER GARDEN • CAR PARK • 8 LUXURY BEDROOMS**

Glympton Road, Wootton near Woodstock, Oxfordshire, OX20 1EJ  
 01993 811 401    @thekillingworth    [www.thekillingworthcastle.com](http://www.thekillingworthcastle.com)

**tlc** **THOMAS LEACH COLOUR**

**Commendable**  
**Dependable**  
**Affordable**

Quality, service AND at a good price?  
 It is possible, with **TLC**.

We're one of Oxfordshire's oldest printers:  
 family-run since 1901.  
 What that means for you is that we own our  
 factory and we own all of our kit, and that means we  
 can offer your business all the benefits of all our  
 experience and expertise at an extra-ordinarily  
 good price.

Try some **TLC**, with **Thomas Leach Colour**.

# Glympton Village Shop

01993 811486

- Gifts
- Jewellery
- Lovely Scarves
- Candles and Diffusers
- Freshly Ground Coffee
- Sandwiches & Baguettes

## Post Office Services & Products available

- Banking
- Free Cash Withdrawals
- Cash Deposits (for most Banks)
- Cheque Deposits
- Postal Services



## Shop Opening hours

Mon, Tues, Thurs, Fri 9am – 5pm

Wed 9am – 1pm

## Post Office Opening hours

Mon–Fri 9am-12noon

### **This month's cover ..**

Jeremy Irons and his dog Smudge.  
- speaker at the January Village Hall Talk



Please keep the photos coming in - ***everyone***;

Remember... Outreach depends on **YOUR** contributions.

**If you have events, clubs, sports, activities - anything at all, please get in touch and we'll see what we can do.**

**If setting up a "poster" for inclusion, it's really helpful to have both a portrait and a landscape version. And remember...an A4 poster reduced to a quarter of an A6 page is often too small to read - Keep it simple to get your message across**

**Deadline for the March 2024 edition - 15th February :  
email to [outreachwgk@gmail.com](mailto:outreachwgk@gmail.com)**

*Mel*

THE PARISH OF WOOTTON,  
GLYMPTON AND KIDDINGTON



**SERVICES  
IN FEBRUARY**

SUNDAY	4th	10.15am	St Mary's, Wootton	Sunday Light
SUNDAY	11th	10.15am	St Mary's, Glympton	Parish Communion
ASH WEDNESDAY 10.00am or 7.30pm				
We are invited to attend services at St Mary Magdelene, Woodstock.				
SUNDAY	18th	10.15am	St Mary's, Wootton	Parish Communion
SUNDAY	25th	10.15am	St Nicholas, Kiddington	Parish Communion



**C**HRISTMAS  
FOOD BANK APPEAL

Heartfelt thanks to everyone who made donations to help to make up the Christmas Food Bank boxes. The collecting boxes will remain in shop and church, please keep up the giving, the need is ongoing and your generosity is much appreciated.

*Connie Surtees*

The Wootton Village  
Pop-Up Tea Room is back!!  
Saturday 17th February  
10.30 - 12.00  
in Wootton Church



Come along and enjoy  
**HOMEMADE CAKE, TRAYBAKES**  
**FRESHLY BAKED SCONES**  
**TEA, FILTER COFFEE**  
and **SOFT DRINKS**

## DATES FOR YOUR DIARY: FUTURE CONCERTS IN WOOTTON CHURCH.

SUNDAY, 5TH MAY at 3.00pm.

Baroque lute duets to be given by two lutenists from Switzerland.

SUNDAY, 18TH AUGUST at 3.00pm.

French lute songs to be given by Fred Jacobs of Amsterdam, who has performed often in Wootton church, and his erstwhile student, the Argentinian singer Jonatan Alvarado.

SUNDAY, 8TH SEPTEMBER at 3.00pm.

A return visit by "Sounds Historical" who played in Wootton last year.

This will feature music for recorders, flutes, lute and viola da gamba.

*Michael Lowe*



Wootton Community  
and Sports Trust

## UPCOMING EVENTS AT THE BURDITCH HALL

HOSTED BY WCAST:

FRIDAY 2ND FEBRUARY

- the bridge bar reopens with a pizza night 7-9pm - all welcome, eat in or takeaway!

FRIDAY 16TH FEBRUARY

- Valentines Cocktail Night

FRIDAY 1ST MARCH

- Bingo night and Meat & Produce Draw

Huge thanks to all our volunteers and supporters!

*Meghan Del Monte*  
WCAST

## NEWS FROM WOOTTON PARISH COUNCIL

The January parish council meeting was held on a cold dark winter night, and most of our usual observers stayed at home, probably wisely. However we were joined by one intrepid villager and we much appreciated his support.

There was though very little of excitement on the agenda. We reported that work was continuing on analysing the hundreds of pages of the Botley West consultation documents and that we would be submitting our response by the deadline of 8 February. Of course, everyone is entitled to send in their own responses by that date but if you have a point which you feel the parish council should consider then please let us know urgently.

Work on the neighbourhood village plan has now started. There will be a full village consultation in the coming months but again if you have thoughts before then please let our Clerk know ([wpcclerk0@gmail.com](mailto:wpcclerk0@gmail.com)) and she will feed it in to the process. Apart from that we heard that the county council will shortly be setting out its road safety improvement plan for Woodstock, which is likely to involve some lower speed limits and other measures. And it looks as if there may be a new library on

the horizon. County councillor Andy Graham has been working hard on a scheme to improve the long stay car park, provide a community hub including a library, and possibly some low cost housing as well. Hopefully there will be more news on this in the months ahead.

At this time of year, potholes in our roads seem to appear overnight. If you find one then do please report it. This is very easy using the

county council's website. Just go to <https://fixmystreet.oxfordshire.gov.uk/> and you can log its precise position on the map. If the pothole is dangerous then please report it as an emergency on 0345 310 1111. If the problem doesn't get fixed then please report it to us - and we can take it up with OCC.

Finally, our next meeting will be on Monday 5 February at the usual time of 7.30.

*John Harwood*

## UPCOMING VILLAGE EVENTS

**FRI  
FEB  
9**

### PANCAKE PARTY

**6.30PM**

WOOTTON VILLAGE HALL

**FRI  
FEB  
16**

### VALENTINE COCKTAILS

**FROM 6.00PM**

BRIDGE BAR

**FRI  
FEB  
16**

### WOOTTON TALKS

**7.30PM**

WOOTTON VILLAGE HALL

**SAT  
FEB  
24**

### FAMILY FILM NIGHT

**5.30PM**

WOOTTON VILLAGE HALL

**FOR MORE INFO VISIT  
[WWW.WOOTTONBYWOODSTOCK.CO.UK](http://WWW.WOOTTONBYWOODSTOCK.CO.UK)**



# FAMILY FILM & PIZZA NIGHT

Wootton Village Hall is kicking off its 2024 film screenings with a rousing sing-a-long version of The Greatest Showman – a film for all the family.

This award-winning uplifting film from 2017 celebrates the birth of showbusiness, based on the story of P.T. Barnum and the creation of the Barnum & Bailey Circus. The Pizza Boys Bicester will be parked-up outside from 5.30pm-7.30pm serving freshly baked Neopolitan pizzas, not just for our filmgoers but for anyone who'd like to skip cooking for the evening and grab a take-away.

The film will begin at 6.30pm with a running time of 1hr 45mins with comfy seating for the younger ones (and popcorn). We ask you bring your own drinks to ensure all needs are catered for.

Tickets are £5 p/person with under 16's free of charge and can be bought from Wootton Village Stores or by Emailing:  
WoottonVillageHall@hotmail.com

*Zoe Wheeler*

WOOTTON VILLAGE HALL  
PRESENTS  
**THE  
GREATEST  
SHOWMAN**

**FAMILY SING-A-LONG  
AND PIZZA NIGHT**

**Sat 24 February**

Film screening 6:30pm  
Pizza van serving 5:30-7:30pm

£5 p/person & under 16's free  
Bring your own drinks

TICKETS FROM  
WOOTTON VILLAGE STORES  
OR EMAIL  
WoottonVillageHall@hotmail.com

Feel free to come for pizza even if you're not coming to the film as the Pizza Boys Bicester will be parked-up outside

www.woottonbywoodstock.co.uk

**Glympton  
Cream Teas**

Cakes - Coffee - Tea

5<sup>th</sup> May 2024  
2<sup>nd</sup> June 2024  
7<sup>th</sup> July 2024  
4<sup>th</sup> August 2024  
1<sup>st</sup> September 2024

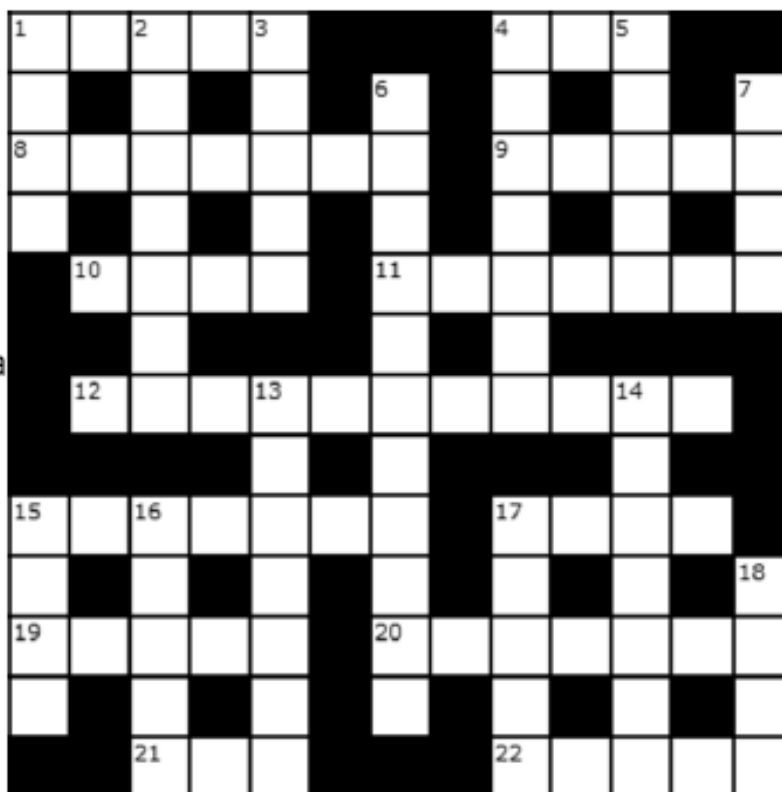
At Glympton Village  
Hall  
2.30pm till 5.00pm

Everyone welcome

**THE "OUTREACH" CROISSANT CROSSWORD — No. 224**

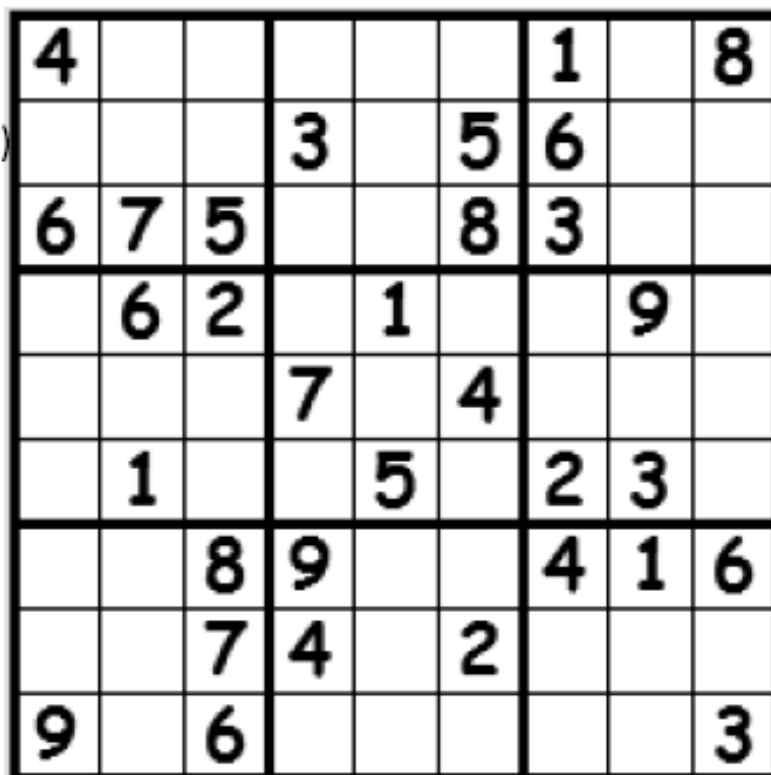
*Across*

- 1) Culinary plants (5)
- 4) Drink with small mouthfuls (3)
- 8) Uproar (7)
- 9) Irritate (5)
- 10) Self-satisfied (4)
- 11) ..... & Sons, British folk-rock ba  
(7)
- 12) Not wavering (11)
- 15) Little flute (7)
- 17) Catch sight of (4)
- 19) Pile of stones (5)
- 20) Amaze (7)
- 21) E.g. Oxygen, Nitrogen (3)
- 22) Assists in wrongdoing (5)



*Down*

- 1) Fling (4)
- 2) Alan ....., former British actor (7)
- 3) Projectile weapon (5)
- 4) Stutter (7)
- 5) Bean variety (5)
- 6) Cold, impassive (11)
- 7) Looked at with interest (4)
- 13) Quantities (7)
- 14) Planet (7)
- 15) Select (4)
- 16) Hold on tightly (5)
- 17) Additional (5)
- 18) Betting probabilities (4)



**Now, it was a bumper entry for January, and I don't cheat with the draw!... but...**

**Last month's winner, January, was ... JILL LEE - AGAIN, AGAIN !**

**- Congratulations!** Commiserations to those not lucky this time.... don't give up!

Completed puzzles should be handed in at Wootton or Glympton Stores, with your name and phone number, before the 15th of the month. The first correct answer drawn after the 15th of the next month will win four croissants.

Outreach is grateful to WOOTTON STORES for their continued generous support.



**AN EXHIBITION OF POTS BY  
CLAUDIA CLARE**

**WOOTTON LANDSCAPES,  
SOLITUDE AND EXILE**

**FROM SAT 11 FEB TO FRI 16 FEB**

**OPEN 4PM-7PM DAILY  
11.30AM-7PM ON THURS 15 FEB  
OR BY APPOINTMENT**

**AT ZIONS HILL, TOP LANE, WOOTTON,  
WOODSTOCK, OX20 1DW**

**CONTACT [FRANCES.BATES@BTINTERNET.COM](mailto:FRANCES.BATES@BTINTERNET.COM) / 07770 931 955**

Claudia Clare is an Internationally celebrated potter. She describes herself as a feminist artist who makes painterly pots. She trained as a painter but transferred to pots because 'I found the turning surface sympathetic to an unfolding visual narrative. Pots also break and can be rebuilt. It is a compelling metaphor for the human experience of trauma and survival and one I deploy particularly in my feminist work'.

"This is history painting from a democratic viewpoint, in a domestic medium, which celebrates the hand-made material object as well as art's subversion."

Jackie Wullschlager, Financial Times, 2012

**[www.claudiacclare.co.uk](http://www.claudiacclare.co.uk)**



## **S**TONESFIELD GARDENING CLUB

The Gardening Club does not meet in January so nothing to report on that front, but we do have an interesting collection of speakers lined up for 2024. Please see boxed advert.

We will kick off with our AGM on Monday 12 February. Meet at 7pm in the St James' Centre for a glass of wine (we're resorting to bribery to get you there!) and then stay for a talk by local ornithologist Paul Wren. Paul will be chatting to us about his love of swifts and his

efforts to increase their numbers in the village, by dint of installing swift boxes on as many houses as he can get permission for.

Don't forget if you are not yet a member and would like a 'trial run', you can come along to any meeting for £4 and then just pay the extra £6 if you decide to join.

The 10% discount for members offered by Yarnton Garden Centre, Freeland Nurseries and Charlbury Garden Centre have all been renewed by the Treasurer, so it is only too easy to recoup the cost of membership with a few shopping trips!

Hope to see you soon.

*Diane Bates*

Secretary Stonesfield Gardening Club  
[www.stonesfieldgardening.info](http://www.stonesfieldgardening.info)

### **Stonesfield Gardening Club**

*Welcoming, friendly and sociable: Ideal for the non-gardener and the gardener.*

Membership of the Gardening Club offers you a range of benefits including

- Free attendance to our talks
- Annual social & quiz evening
- Discounts at local garden centres

Membership for 2024 costs **£10.00** (or **£18.00 for a couple** at the same address). Visitors welcome: £4/talk. Talks held at St James' Centre.

**Plus** there is our annual Plant sale in April and Open Gardens in June 2024.

More details and how to get in contact, can be found on our website.

#### **2024 Talks**

##### **12 Feb**

Paul Wren: Swifts

##### **11 March**

Paul Williams: Potatoes, Peppers, Poisons and Petunias

##### **13 May**

Val Bourne: The Living Jigsaw

##### **8 July**

Chris Day: Taming the Indoor Jungle

##### **9 Sept**

Rosy Hardy: Seasonal Perennials to attract Pollinators.

##### **11 Nov**

Adam Kirtland: A Bulb for every Month of the Year

**[www.StonesfieldGardening.info](http://www.StonesfieldGardening.info)**

# W

OODSTOCK  
& DISTRICT U3A

Woodstock & District u3a's programme for 2024 got off to an early start. Our first meeting with an invited speaker took place on 4th January, when Janine Kilroe came along to give us some useful tips on how to improve the photos we take with camera or mobile phone. The 1st February meeting switches to a different art form: headlined 'Royal Art', speaker Lizzie Rowe promises to reveal some of the 'Treasures' from the Royal collections: 2 p.m., St. Hugh's Centre, Hensington Road, Woodstock. After that meetings take a more scientific turn, with speakers slated to enlighten us on 'Unnatural Selection' (7th March) and 'Keep Your Hair On' (4th April) - at least, one guesses there must be some science in it?. Same venue and time.

Running throughout the year, the Branch's 'Interest Groups' continue to flourish and, indeed, expand: there are now two Groups each for Board Games and Needlework, and a 'Short Walks' group now supplements the long-established and popular Walking Group, meeting twice monthly. Dare one guess that the short walk often ends up at a local hostelry? If so, this column is up for it.

Further information, as always, at

[www.woodstocku3a.uk](http://www.woodstocku3a.uk).or come along as a guest at any of the speaker meetings on the first Thursday of each month; St. Hugh's Centre, Hensington Road, Woodstock. .

*Chris Sladen*



# W

OOTTON VILLAGE HALL  
COMEDY NIGHT

The January Blues were well and truly driven away on Friday 12<sup>th</sup> as the village hall rang loud with laughter and merriment for the inaugural village hall comedy night. It was a full house of 85 and there were plenty of guffaws, thigh slaps, and belly laughs to be found. Jon Wagstaffe expertly guided us through the three comics in Aled Kealey, Esther Manito, and Mike Cox each one bringing a very different style and energy to the room. Esther in particular had people rolling the aisles with her energetic and direct comedy. Huge thanks to all on the village hall committee (especially Andy for

running the bar and being the front row target for a lot of the jokes!) for all of the organisation, Little Ox for providing the bar, and of course big thanks to everyone who came out for the night.

It was such a hit that we're going to do another one – the next will be April 20<sup>th</sup>. Put the date in your diary, or better head over to Eventbrite or the stores to book your tickets now! <http://tiny.cc/grz0wz>

*Rhys Jones*



The 2024 series of the Wootton Quiz started with a lively night of questions set by Gary Timms. Gary's rapid-fire Top Tens gave the seven teams plenty to discuss (heatedly!) from largest countries to books of the bible, and 2023 films to pub names. And we had to find Christmas-related places across the globe - and who knew that Enya was top-selling Irish artist? (If only we'd listened to Jeremy....)

The Desperados chased hard to end in third place, and Pickled Brians got within half a point, but "Who's Got The Mustard" came out top.

Congrats!!

Next month the quiz will be on the THIRD Sunday (instead of the usual second Sunday), so 18th February, at 7pm in the Killi. Nicholas and

Didier will be setting the questions. You don't need a team - just turn up!

If you'd like to be added to the email list, please let me know at [pclp@btinternet.com](mailto:pclp@btinternet.com).

*Phil*



Our next speaker at 7.30pm on Friday February 16th is AIR MARSHAL SIR IAN MACFADYEN, head of the British Forces during the Gulf War and he also flew Phantom jets during the Falklands War.

From 1991, as an Air Vice Marshal, Sir Ian was Assistant Chief of the Defence Staff and was later promoted to Air Marshal and became Director General of the Saudi Arabia Armed Forces Project. Earlier in his career, he was a flying instructor and a member of the Poachers formation aerobatic team at the Royal Air Force College, Cranwell. He was also the RAF solo display pilot for the Phantom. He has been Lieutenant Governor of the Isle of Man and also Constable and Governor of Windsor Castle - and is a former National President of the Royal British Legion and later Honorary Inspector General of the Royal Auxiliary Air Force.

7.30pm on Friday March 22nd - DAME PRUE LEITH, businesswoman, journalist, novelist, cookery writer and broadcaster. She is currently a judge on the Great British Bake Off and The Great American Baking Show - and we warmly welcome her back for a much-anticipated appearance after her previous evening at the Wootton Talks in 2010. Earlier in her career, Prue's restaurant, Leith's, was awarded a Michelin Star and she is a past winner of the Veuve Clicquot Businesswoman of the Year. Prue has been a director on many boards, including British Rail and Whitbread and she chaired The School Food Trust - tasked with improving school meals.

She was also the instigator of the Fourth Plinth contemporary sculpture project in Trafalgar Square and was an advisor on the Government's Hospital Food Review.

Prue is Patron of Chefs in Schools, as well as Dignity in Dying. In 2023, she and her son, Daniel, made a Channel 4 documentary on assisted dying called Prue and Danny's

Death Road Trip. Her new series, Prue Leith's Cotswold Kitchen, is due to be aired in February 2024. Entry is £10 in cash - and includes free food. Wine and soft drinks are available for a modest donation. (Children over 16 welcome). To reserve seats, please contact us through our website:

[www.woottontalks.co.uk](http://www.woottontalks.co.uk)

*Andy Morgan*

# Everyone is invited to the annual PANCAKE PARTY

in aid of our parish churches  
in Wootton, Glympton and Kiddington

## WOOTTON VILLAGE HALL

on Friday 9th February from 6.30pm.



Admission at the door:

Adults - £10

Children under 16 - £5



Musical entertainment  
by "Levity".

Pancakes  
and cheese  
galore!



Raffle.

Donation bar.

◆ **BOTLEY WEST COMMUNITY CONSULTATION ENDS 8th FEBRUARY**

PVDP's Community Consultation Process for the Botley West Utility-Scale Solar Power Station will soon be ending. SBW Chair Alex Rogers encourages everybody to engage in this consultation even if you haven't been able to attend an in-person event.

1. Complete the Stop Botley West questionnaire about whether the consultation has been adequate and useful for you even if you've not attended an event and have only seen PVDP's Community Consultation Leaflet posted through your door.

You can complete the questionnaire online using this QR code or on paper using the leaflet that came through your door this week (locations of places to return them are on the leaflet).

2. Write to PVDP with your comments and questions about their proposals (based on what you have learnt from events or PVDP publications) and send copies to your MP and local councillors.



◆ **PLEASE DO THIS BY 8th FEBRUARY 2024 when the CONSULTATION ENDS**

Stop Botley West have been monitoring the consultation events to estimate the levels of attendance and also to provide questionnaires on how our residents view the adequacy of the consultation. This is important as the Planning Inspectorate will want to see evidence that the Community Consultation has been done properly, with communities affected by the proposal able to ask questions, receive additional information to inform their views and responses to the development and allow the Developers to respond through modifications of the scheme. An inadequate Consultation can result in the Planning Inspector requesting for the process to be repeated. Stop Botley West will provide the results of their questionnaire to both Parish and District Councils so it can be used to inform the views of Parish Councils on the adequacy of the Consultation and provide input to the Adequacy of Consultation Statement provided to the Planning Inspectorate by our District Councils.

Alongside the Community Consultation we have seen the publication by PVDP of the Phase Two Community Consultation Leaflet and the Preliminary Environmental Impact Report (PEIR). The latter is a huge document of over 7,000 pages of individual chapters, appendices and a Non-Technical Summary describing the environmental baselines of the area of the proposal, the impacts of the project and mitigation strategies for these impacts which will be put in place by the Developer. Stop Botley West are scrutinizing these documents to look at whether they provide adequate information for the community to respond to the consultation and also whether the baselines, impacts and mitigations proposed are accurate, follow government guidelines and/or are realistic. To achieve these goals, Stop Botley West have engaged with experts in various specific fields relevant to the PEIR to examine individual chapters and to report on their contents. A review of the collated reports of adequacy will be made available to Parish and District Councils and for later input into the planning process. Summaries will be produced to inform affected residents in the proposed area of development.

**IMPORTANT MEETING at WODC Offices in Witney**

The West Oxfordshire District Council's Development Control Committee meet at the WODC Offices on Woodgreen, Witney, Oxon OX28 1NB at 10:00am on Monday 5 February. They will be discussing the Botley West Solar Power Station proposals.

SBW will be speaking at this meeting and we hope that many supporters will also attend either inside the chamber or outside where we hope for a press presence. Please put the date in your diary!

For further information and to register for updates please visit: <https://stopbotleywest.com>

# D S JONES

BUILDING, ROOFING

&

PROPERTY MAINTENANCE

All aspects of building, roofing and property maintenance undertaken

For all enquiries call or email

07496149990

[dsjmaintenance@hotmail.com](mailto:dsjmaintenance@hotmail.com)

Instagram: @dsjonesbuilding



SIMPLY BEAUTIFUL DECORATION

All forms of interior and exterior painting and decorating, specialising in murals.



T: 01295 811026

E: [pete@noahsarkpainting.co.uk](mailto:pete@noahsarkpainting.co.uk)

W: [noahsarkpainting.co.uk](http://noahsarkpainting.co.uk)

Pebsham Cottage, Aynho Road, Adderbury  
Oxfordshire, OX17 3NL

Physiotherapy clinic  
& Pilates studio

A helping hand  
to get you back to health



Tucked away between the Old Mill Coffee House and the Methodist Church on West Street, we offer a full treatment programme to get you back to health.

Manipulation	Low back pain
Acupuncture	Sports-related injuries
Massage	Neck pain
Ultrasound	Muscle injury
Manual Therapy	Joint pain
Pilates exercise	Post-op re-hab

Visit our website for more info about our Physiotherapy treatments and for our timetable of Pilates exercise classes.



Chipping Norton Physio  
Lectern Hall, West Street  
Chipping Norton OX75LH  
T 01608 645 608

E [physio@chippingnortonphysio.com](mailto:physio@chippingnortonphysio.com)  
[www.chippingnortonphysio.com/](http://www.chippingnortonphysio.com/)

# Katrina Moss

Inner Peace Reiki Treatment  
in the comfort of your own home.

Level 2 Reiki practitioner.

Treatment and public liability  
insurance.

Reiki complementary healing  
can be beneficial in many ways.

Please contact me for a consultation

01993 891131 / 07824357690

katrinamoss1979@icloud.com

*Gift vouchers available*

## DIRTY CARPETS, UPHOLSTERY, RUGS



**Most carpets  
dry within the  
hour**

**Unbeatable  
results,  
removes  
almost all  
spots & stains**

**Call**

**GRIMEBUSTERS**

**01993 868924 01865 726983**

**www.grimebusters.co.uk**



# Ambiance

beauty

www.ambiancebeauty-woodstock.com

**07934123931**

Microdermabrasion  
Clinicare Targeted Facials  
NYR Facial & Massage Therapies  
Advanced Waxing  
Eleebana Lashlifts  
The Manicure Company Gel Polish  
and more.....



**Bicester Wills & Probate**

- Standard Single Will - **£225**
- Standard Mirror Wills - **£325**
  - Bloodline Wills - **£625**
- Lasting Power of Attorney  
Property & Financial Affairs - **£325**
- Lasting Power of Attorney  
Health & Welfare - **£325**
- Both Lasting Powers of Attorney - **£500**
- Probate Assistance from - **£1,500**
- Pre-paid Funerals Plans - from **£1,700**

Gail and the Team  
offer a friendly  
estate planning  
service

*Home visits  
no extra  
charge!!*

Come in and see us  
3-5 Causeway, Bicester  
Oxon OX26 6AN  
or phone

**01869 226760**

[gail@bicesterwills.co.uk](mailto:gail@bicesterwills.co.uk)

[www.bicesterwills.co.uk](http://www.bicesterwills.co.uk)



# WOOTTON STORES

*Run for the community by the community*

Our opening hours,  
currently, are:

**Monday-Friday**

**8.00 - 1.30 & 3.00 - 7.00**

**Saturday 8.00 - 12.00**

**Sunday 9.00 - 11.00**



01993 811474

or- email: [manager@woottonstores.org.uk](mailto:manager@woottonstores.org.uk)



**F**EBRUARY:  
PANCAKES AND CHIPS

We all know that St Valentine's Day falls in February. But look – there are many other special days in February! Some excellent people have their birthdays. And this being a leap year, we all get an extra day! Shrove Tuesday is on 13 February, so make sure you pop into Wootton Stores to stock up on eggs, flour and milk so you can make your pancakes.

These days, pretty much every day of every month has an observation/awareness assigned to it, as a quick internet search will reveal. These are some choice ones for February:  
2 February: World Wetlands Day. We've had plenty of wetlands around Wootton lately.

7 February: Safer Internet Day. I'm going to observe this by switching mine off for the day. Maybe.

20–26 February: National Chip Week. Oh yes. Chips every day. Yes.  
21 February: International Mother Language Day. Ah'm gonnae blether an' haver fae the morn tae the gloamin.

Happy February!

*Melanie Waldron*

4	9	3	2	7	6	1	5	8
2	8	1	3	4	5	6	7	9
6	7	5	1	9	8	3	4	2
7	6	2	8	1	3	5	9	4
3	5	9	7	2	4	8	6	1
8	1	4	6	5	9	2	3	7
5	2	8	9	3	7	4	1	6
1	3	7	4	6	2	9	8	5
9	4	6	5	8	1	7	2	3

I	O	T	A		D	A	Y	D	R	E	A	M	
N		H		M		N		E		D		E	
C	A	R	R	O	T	S		L	I	M	I	T	
O		O		T		W		I		O		E	
N	O	W		H		E		B	A	N	J	O	
V				E	E	R	I	E		D		R	
E		P		R				R		S		O	
N		R		T	A	M	P	A				L	
I	R	E	N	E		A		T		A	D	O	
E		D		R		L		E		B		G	
N	O	I	S	E		B	O	L	S	H	O	I	
C		C		S		E		Y		O		S	
E	N	T	R	A	N	C	E			W	R	I	T

Planning a christmas event?



Glympton Village Hall has everything you need to give your guests a warm welcome:

- Fast broadband
- Fully equipped kitchen
- Large new screen TV
- Seats up to 30
- Mulled wine/tea urn

Please get in touch for hire costs & bookings:

☎ 01993 811 486

✉ serena.warmington@gmail.com

📘 facebook.com/glymptonvillagehall

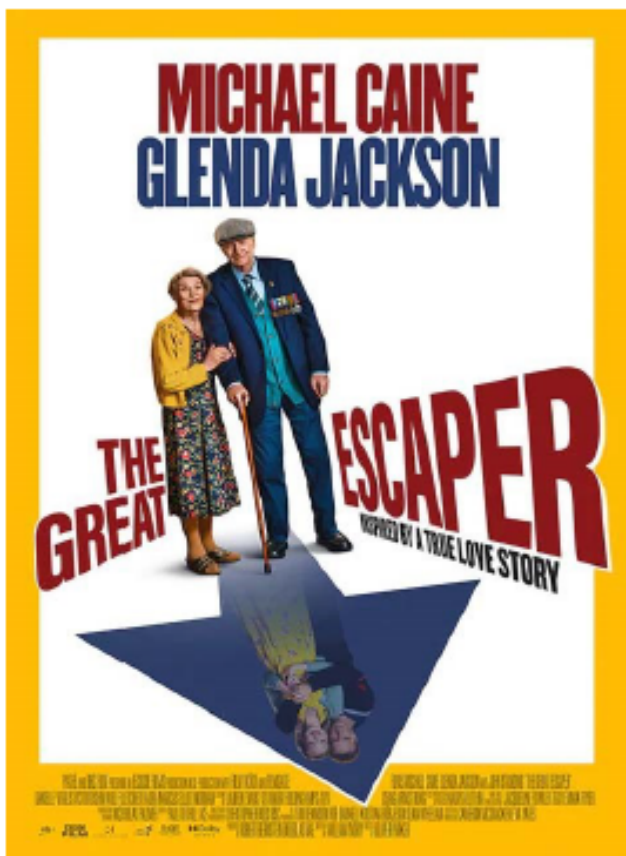


Made with PosterMyWall.com

## COMBE COMMUNITY CINEMA

On February 23rd we're showing The Great Escaper at the Combe Community Cinema in the Hub. Made in 2023, the film is based on a true story that made national news about pensioner Bernard Jordan, who in 2014 absconded from his care home in Hove to attend D-Day commemorations in Normandy. Stars Michael Caine and Glenda Jackson in her last film role. Catherine Shoard of The Guardian called the film "brilliant" and "flintier than you might think, and very moving". Classification 12A. Doors open 7.30. Tickets £5.00, bar available as usual for pre-film drinks.

*Deborah Manning*



# *Jerrams Brothers Funeral Directors*

*33 High Street,  
Woodstock, OX20 1TE  
(01993 811491)*

- *Private Chapel of Rest*
- *24 hour personal family service*
- *Pre-Paid funeral plans*

As the third generation of a funeral directing family, Nicholas and Benjamin Tonks believe that, at a time of bereavement, compassion and the family's wishes are paramount. In partnership with the Church and the community we endeavour to give the bereaved as much care and support as possible.



## **WOODSTOCK CHIROPRACTIC CLINIC**

*Providing quality chiropractic care since 1983*



*We use a range of manual techniques, such as joint manipulation, mobilisation, dry needling acupuncture and rehabilitation exercises to help relieve many common spinal problems. Alongside chiropractic treatment, we also offer physiotherapy and massage.*



For further information or to make an appointment please call **01993 811815**, or visit our website **[www.woodstockchiropractic.co.uk](http://www.woodstockchiropractic.co.uk)** and 'Like us on Facebook' for news, offers and appointment availability.

**Leigh Edwards Solicitors**

## **DIVORCE AND FAMILY LAW SPECIALISTS**

Specialists in divorce, separation, children matters, pre and post nuptial agreements

friendly sensible service  
easy parking

**for a free initial consultation call**

**tel: 01993 703272**

[www.leighedwards.com](http://www.leighedwards.com)

Authorised and  
Regulated by the  
Solicitors Regulation  
Authority

14 Market Square,  
Witney, Oxon OX28

Leigh Edwards Solicitors is a trading name of Lee Chadwick Solicitors LLP

Parish of Wootton, Glympton, and Kiddington

## **H** **ELP WITH FINANCIAL PROBLEMS**

Thanks to the generosity of some parishioners, we are able to offer grants to anyone who is experiencing financial difficulty. Please contact the Vice Chairman of the PCC, Peter Browne, on 01608 658017 or by email: [brownepd49@gmail.com](mailto:brownepd49@gmail.com) giving family details and a summary of your financial commitments.  
**HELP IN TIME OF NEED**

# **PELLMANS**

## **Your Local Solicitors**

- **Business and Employment Law**  
Contracts, Legal Compliance and Disputes
- **Property**  
Buying and selling homes, Investment Property, Commercial and Agricultural
- **Divorce**  
Finances, Children and Cohabitation Disputes
- **Wills, Probate and Trusts**  
Tax Planning and Lasting Powers of Attorney

**01865 884400**

[www.pellmans.co.uk](http://www.pellmans.co.uk)

1 Abbey Street, Eynsham, Oxford OX29 4TB  
**Home visits and evening appointments  
available**

There can be no doubt that the new 20mph limit in Wootton is not being observed by all!

Community Speedwatch is a national initiative where proactive members of local communities join with the support and supervision of their local police to record details of speeding vehicles using approved detection devices.

Registered keepers of vehicles exceeding the speed limit are contacted - initially with a letter explaining the potential risks and consequences of their dangerous behaviour. Repeat offenders will receive a visit from the local police, irrespective of where they live. Beyond these friendly gestures, focused enforcement and criminal prosecution follow based on the collated evidence.



Towards the end of last year I set up a local Speedwatch "Group" with Thames Valley Police and at that point, with Christmas getting close, I decided to wait until the New Year before moving forward.

I'm now in a position to invite others to join the group and arrange a meeting to discuss where we go from here. This is a fairly straightforward process and involves heading to the TVP Speedwatch site and filling in your registration details online. There are also some short videos to watch, with questions after.

Type <https://www.communityspeedwatch.org> into a web browser  
Click on the [Register] tab.

Then to the left click on [Join Existing Group]

Choose [Thames Valley] from the pull down and click [Continue]

Choose [Oxfordshire] from the pull down and click [Continue]

Now choose [Wootton] from the pull down and click [Continue]

Finally complete your details in the registration form and follow the emailed instructions.

Note that there is a downloadable guide to registration by clicking on [Help]

then [Docs]

Once we're quorate - I think the minimum is three members - we can decide on our priorities and develop a plan of campaign.

If you'd like to join us, or have any other questions, please email me at [mel.leggett1@gmail.com](mailto:mel.leggett1@gmail.com)

*Mel*

## LOCAL CONTACT PEOPLE

Rector	Position vacant	
Licensed Reader	Mrs Jenny Wagstaffe	01993 811027
Churchwardens: Wootton	Mr Nicholas Tomlinson Mr David Smith	01993 813484
Churchwardens: Glympton	Lt. Col. Peter Browne Mrs Connie Surtees	01608 658017 01993 812076
Churchwarden: Kiddington	Mrs Jo Deacon	07917 158274
Verger: Wootton	Mrs Jane Scott	01993 813236
PCC Secretary	Mrs Ann Leggett	01993 813005
Baby & Toddler Group - Chair:	Ms Clare Potter	07921 120068
Bell Ringers - Tower Captain:	Mr Mel Leggett	01993 813005
Glympton Village Hall - bookings:	Mrs Serena Warmington	01993 811486
Glympton P.O. & Stores	Mrs Serena Warmington	01993 811486
Wootton Parish Council - Chairman:	Mr John Harwood	johnharwood.wpc@gmail.com
- Clerk:	Ms Cathy Fleet	clerkwpc0@gmail.com
Police -	Sgt's. Payne and O'Hare,	
	PC Rob Webb	24 hour "non-urgent" incident line 101
Community Support Officers	PCSO 9356 Helen Duffield	mob. 07980 764756 email: helen.duffield@ thamesvalley.police.uk
Village Hall (Booking admin):	Mrs Caroline Bateman	cazb44@btinternet
Wootton Community Chair And Sports Trust (WCAST) Sec.	Meghan Del Monte Natalie Mitchell-Boorne	woottoncast@gmail.com
Wootton Conservation Trust: Chair	Mr Phil Parker	
Local contacts:	Mr Ed Taylor	07771 893046 edward@roberttaylorandson.com
Wootton Flower Show – Sec.	Natalie Mitchell-Boorne	07971 638136
Wootton Stores	Mrs Michele Glanville.	01993 811474
Wootton Relief in Need Chair	Mr Simon Heighes	simonheighes.wrin@gmail.com
"Outreach" Editor	Mel Leggett	01993 813005
e-mail address		outreachwgk@gmail.com
Advertising Manager	Ms Fran Gardner	07770 324277
Treasurer	Mr Neil Scott	01993 813236

Should you, or someone else, be on this list?? Please let the editor know of any omissions or corrections.

# LYNDY CARY

CORDON BLEU

OXFORD • CHELTENHAM • BATH  
THE COTSWOLDS & BEYOND

CORDON BLEU CATERING TO YOUR DOOR

07891 606873 • CONTACT@LYNDYCARY.COM • LYNDYCARY.COM

# VORTEX

JETTING & DRAINAGE

A 24/7 COMMERCIAL & DOMESTIC SERVICE

- Drain, toilet & pipework unblocking
- CCTV drain inspections and locating services
- Drain repair & maintenance

**07943 584 741**

**info@vortexjetting.co.uk**

**www.vortexjetting.co.uk**



TELEPHONE 01869 340202      FAX 01869 340074

DOMESTIC HEATING OILS—FARM FUELS  
BOILER MAINTENANCE—TANK REPLACEMENT

DANSAM HOUSE, 29 WORTON ROAD, MIDDLE BARTON  
CHIPPING NORTON, OXON OX7 7EE

EMAIL: [sales@ackermanandniece.co.uk](mailto:sales@ackermanandniece.co.uk)

**Oven  
Wizards®**

*We clean your oven...so you don't have to*



Call today to have your oven, hob, extractor or Aga professionally cleaned.

**Andrew Zemitis**

Tel. 01865 965085, Mob. 07799 662220

E mail [andrewzemitis@ovenwizards.com](mailto:andrewzemitis@ovenwizards.com) - [www.ovenwizards.com](http://www.ovenwizards.com)